

T-18-N; R-30-W

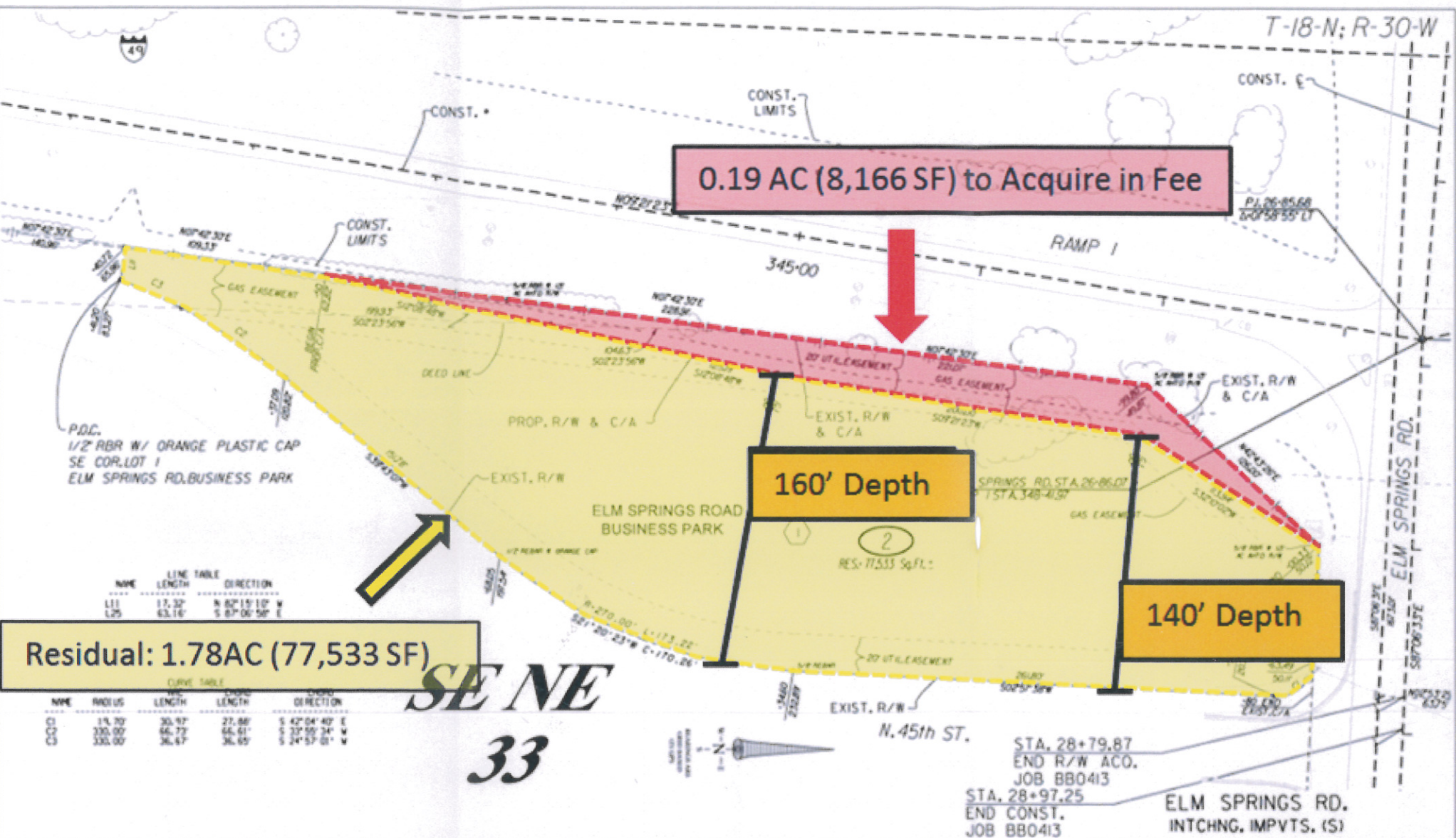
0.19 AC (8,166 SF) to Acquire in Fee

160' Depth

140' Depth

Residual: 1.78 AC (77,533 SF)

SE NE
33



LINE	LENGTH	DIRECTION
L11	17.32'	N 89°15'10" W
L12	63.16'	S 87°06'58" E

NAME	RADIUS	ARC LENGTH	CHORD LENGTH	CHORD DIRECTION
C1	15.70'	30.97'	27.88'	S 42°04'40" E
C2	330.00'	66.72'	66.61'	S 37°55'24" W
C3	330.00'	36.47'	36.65'	S 24°57'01" W

STA. 28+79.87
END R/W ACO.
JOB BB0413
STA. 28+97.25
END CONST.
JOB BB0413

ELM SPRINGS RD.
INTCHNG. IMPVTS. (S)
ARKANSAS STATE HIGHWAY COMMISSION
RIGHT OF WAY MAP
JOB BB0413 WASHINGTON COUNTY

NO.	DATE	REVISION	BY	CHKD	2	OWNER	C-S	REV.	1/27	2/9	8/19	8/06
1	4/20/14	REVISIONS				MitNews Investments, LLC						
2												